



## The Freehold

Hadlow TN11 0ES

Offers In The Region Of £699,950



COUNTRY HOMES



## Hadlow TN11 0ES

### SUBSTANTIAL DETACHED HOME IN POPULAR VILLAGE.

This large period detached family home offers just under 3000 square feet of space with the ground floor offering over 1000sq ft! As you can see from the floorplan, the versatile accommodation would suit the needs of any growing family.

As we enter the property we are greeted by the hall way leading to the Dining room and Lounge. Furthermore downstairs we have the kitchen dinner and downstairs bathroom. Moving to the first floor we have four good sized double bedrooms with two en-suite and a family bathroom. On the very top floor we have a further two double bedrooms and attic room space. Some other features this property offers is the cellar space and double garage with parking for at least four cars.

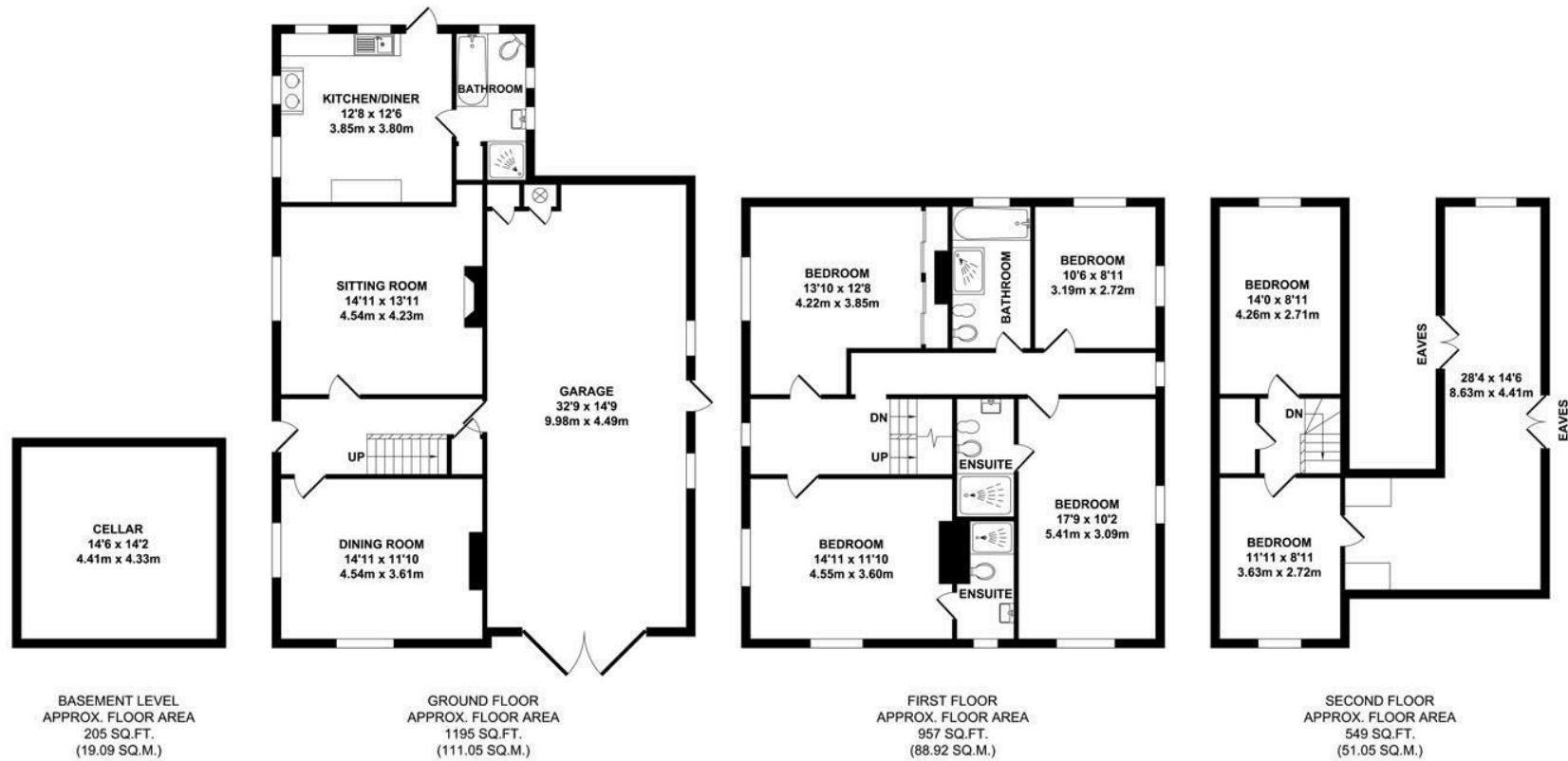
Located in a popular quiet location within the village on this popular horse shoe road with its other character homes giving you that period village feel. Hadlow, you will have everything you need. The village offers a local primary school, shops and restaurants and excellent road links to neighbouring town of Tonbridge which offers a larger shops , main line station and popular grammar/compressive schools.

This home will stand out from the rest for many reasons so a viewing is a must.

\*\*\*\*\* VIEWING IS HIGHLY RECOMMENDED! \*\*\*\*\*

- Attractive Detached Home
- 6 Bedrooms
- Dining Room
- Living Room
- Kitchen Dinner
- 4 Bathrooms
- Intergral Double garage
- Cellar
- Ideal Location
- Walking Distance to Hadlow Village Centre

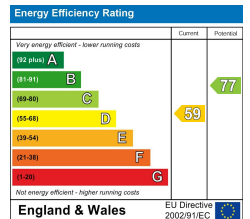




**TOTAL APPROX. FLOOR AREA 2907 SQ.FT. (270.11 SQ.M.)**

Whilst every attempt has been made to ensure the accuracy of the floor plan contained here, measurements of doors, windows, rooms and any other items are approximate and no responsibility is taken for any error, omission or mis-statement. This plan is for illustrative purposes only and should be used as such by any prospective purchaser. The services, systems and appliances shown have not been tested and no guarantee as to their operability or efficiency can be given.

Zome Media ©2021



6 Commercial Road, Paddock Wood, Kent, TN12 6EL  
01892 838 080  
countrystates@khp.me

**KHP**  
www.khp.me  
**COUNTRY HOMES**









## Location Map



**TO VIEW CONTACT:**

**01892 838 080**

**countrystates@khp.me**

**www.khp.me**

